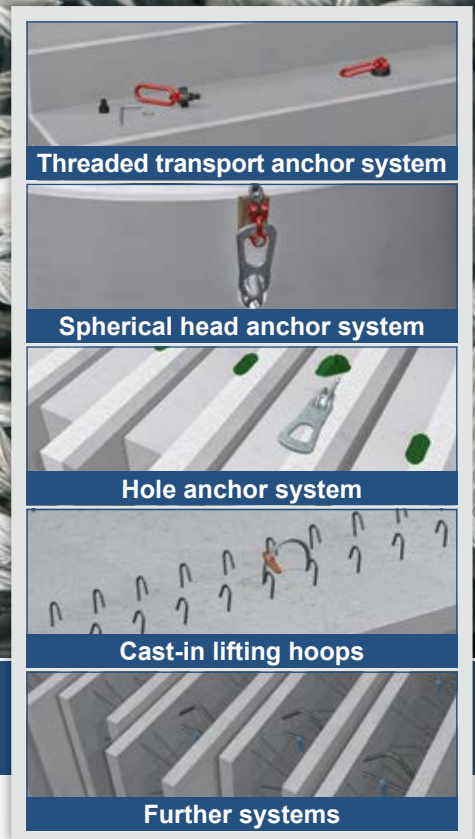


PHILIPP GROUP

Transport and mounting systems for prefabricated units

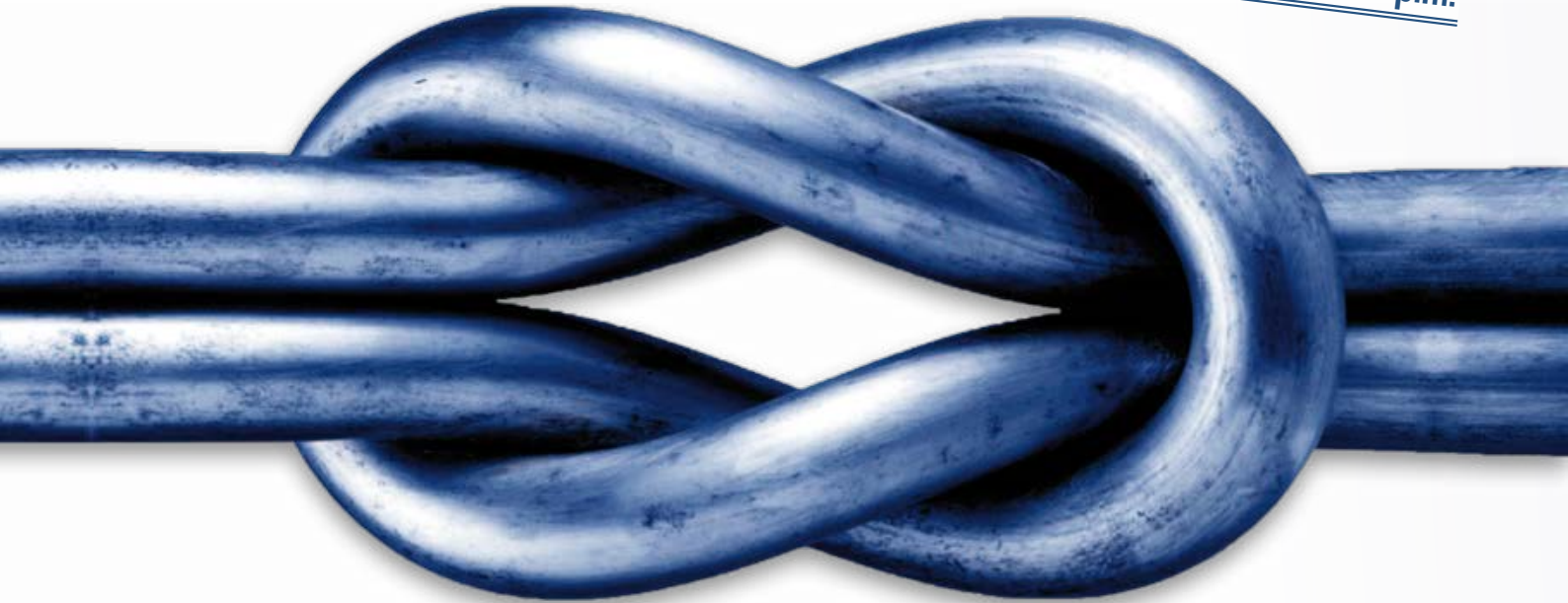


VB3-PU-001.1/2-en - 06/16 - 1/1000



Safety connects

PHILIPP office hours
+49 (0) 06021 / 40 27-300
Mo. - Thurs. 7.00 a.m. - 5.30 p.m.
Fr. 7.00 a.m. - 3.30 p.m.



Order information

Reference number

Please use always our complete reference numbers with your orders and inquiries to ensure a fast and efficient order management.

Special solutions

Special solutions are available on request. Please contact us.

Prices

Our prices are valid ex works.

Minimum order

We are also your partner for small orders. The minimum order is € 100.00.

If an order is less than the minimum order we only charge a handling fee of € 20.00.

Return of goods

Returning goods is only possible after prior consultation. Please note that we charge a processing fee of 25% on the net value of delivered goods. Customized products will not be accepted for return. Customized products will not be accepted for return.

Packing units

Many of our goods are packed in special units. We are selling them in given quantities only.

Cost of packaging

Cost for packaging are invoiced at cost price. Deliveries with euro-pallets or mesh boxes will be invoiced if no exchange takes place.

Raw material surcharge

Currently we do not charge any raw material surcharges. In case of increasing prices for raw material we reserve the right to invoice that charging.

General notes

Catalogues and brochures for transport and mounting systems, hydraulics and pneumatics, wire ropes and lifting and lashing systems are available at www.philipp-group.de

General Terms of Trade

Please refer to the PHILIPP General Terms and Conditions.

Order hotline: +49 (0) 6021/40 27-300

E-mail: export@philipp-group.de

PHILIPP Transport anchor system (Part 1/2)

- Threaded transport anchor system
- Spherical head anchor system
- Hole anchor system
- Cast-in lifting hoops
- Further systems

Page 4 – part 1
 Page 24 – part 1
 Page 32 – part 1
 Page 38 – part 1
 Page 42 – part 1



PHILIPP Connecting technology (Part 2/2)

- Power Duo System | Power Box System
- Thixo mortar | Grout mortar
- Connecting rails | Single connecting loops
- Dowelling system

Page 4 – part 2
 Page 6 – part 2
 Page 6 – part 2
 Page 7 – part 2
 Page 11 – part 2



PHILIPP Facade technology (Part 2/2)

- Sandwich anchor system SPA
- Sandwich anchor system MA/FA
- Sandwich FT-Anchor

Page 12 – part 2
 Page 14 – part 2
 Page 16 – part 2
 Page 19 – part 2



PHILIPP Fixing technology (Part 2/2)

- Fixing sockets
- Cast-in anchor channels
- Trapezoidal sheet metal channels
- Corner guards

Page 20 – part 2
 Page 22 – part 2
 Page 26 – part 2
 Page 33 – part 2
 Page 34 – part 2



PHILIPP Noise reduction technology (Part 2/2)

- Noise reduction system

Page 36 – part 2
 Page 38 – part 2



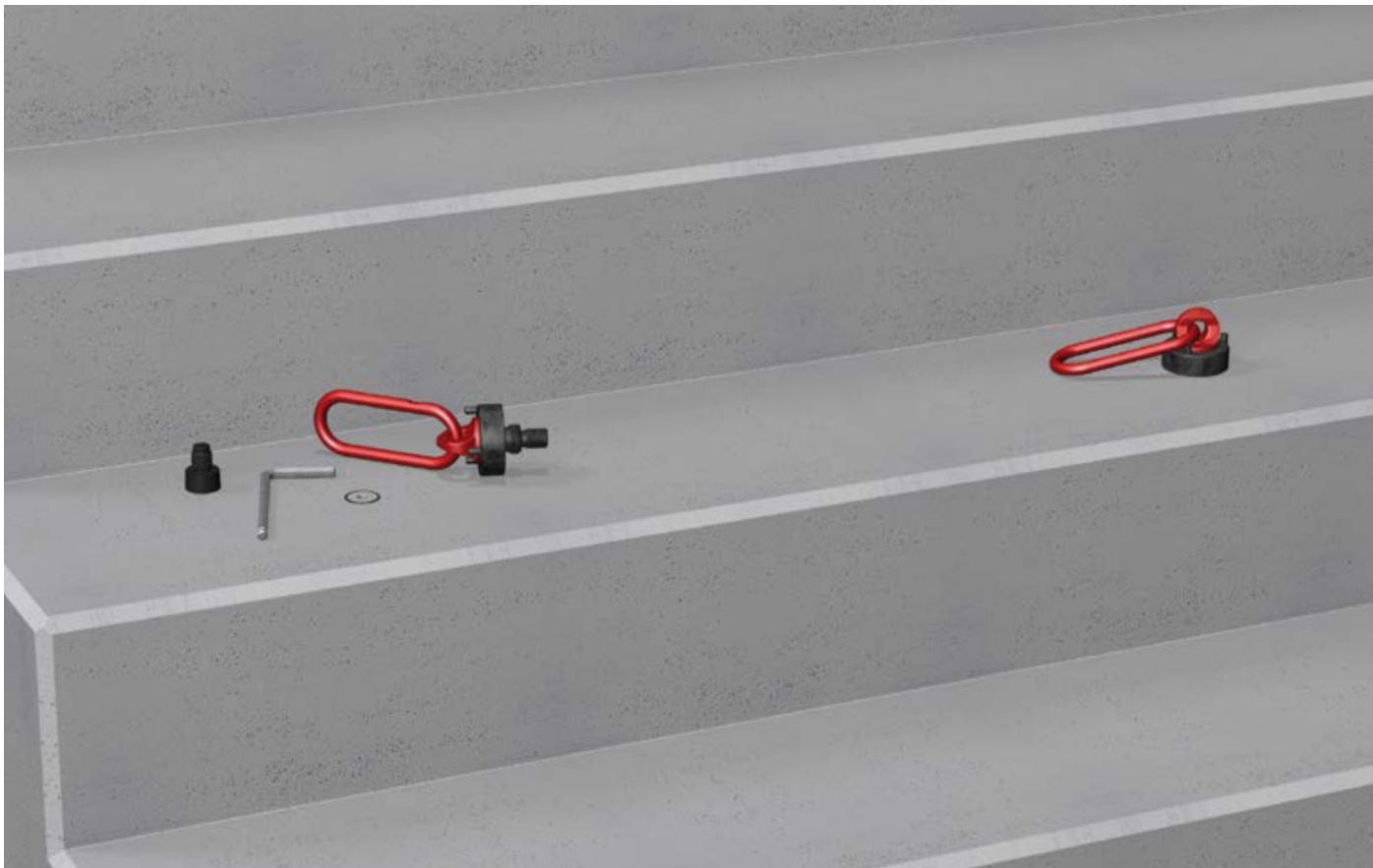
PHILIPP Earthing technology (Part 2/2)

- Earthing sleeve
- Earthing connectors

Page 40 – part 2
 Page 42 – part 2
 Page 43 – part 2



PHILIPP Threaded anchor system



Content

■ Threaded transport anchor - straight long wavy tail short wavy tail	Page	6/7
■ Compact anchor	Page	8
■ Lifting insert with cross hole	Page	9
■ Lifting insert with crimped end	Page	9
■ Lifting insert double sided	Page	9
■ Screw anchor	Page	10
■ Capped end anchor	Page	10
■ Threaded anchor for sandwich panels	Page	11
■ Garage anchors	Page	11
■ Elongation for threaded anchors	Page	11
■ Hexagonal anchor	Page	12
■ Hexagonal plate anchor	Page	12
■ Lifting loop with threaded end	Page	13
■ Adapter for lateral tension	Page	13
■ Wirbelstar	Page	13
■ Wirbelstar KH	Page	13
■ Lifty	Page	14
■ Lifty with wire rope	Page	14
■ Marking ring	Page	15
■ Recess formers KHN	Page	16
■ Threaded sealing cap KHN	Page	16
■ Recess formers WS	Page	17
■ Retaining caps KH	Page	18
■ Threaded sealing cap KH	Page	18/19
■ Angled key for KH-System	Page	19
■ Threaded adapter	Page	20
■ Magnetic fixations	Page	20
■ Fixing screws	Page	20
■ Sealing cap (plastic)	Page	21
■ Chaser screws	Page	21
■ Power System SL	Page	22
■ Transport loop system	Page	23

Transport anchor systems

Connection technology

Facade technology

Fixing technology

Noise reduction technology

Earthing technology

Threaded transport anchor

Transport anchor systems

Connection technology

Facade technology

Fixing technology

Noise reduction technology

Earthing technology

Version: Straight tail, insert bright zinc plated

Type [RD]	Length [mm]	Weight [kg/100 pcs.]	PU [pcs.]	Ref.-No.
12	195	9.00	200	67M12
14	235	17.00	100	67M14
16	275	28.00	100	67M16
18	305	43.00	50	67M18
20	355	64.00	25	67M20
24	405	76.00	25	67M24
30	505	156.00	1	67M30
36	690	310.00	1	67M36
42	840	467.00	1	67M42
52	900	730.00	1	67M52
56	1200	1101.00	1	67M56
60	1400	1636.00	1	67M60

Threaded transport anchor



Version: Long wavy tail, insert bright zinc plated

Type [RD]	Length [mm]	Weight [kg/100 pcs.]	PU [pcs.]	Ref.-No.
12	137	7.00	200	67M12WE
14	170	14.00	100	67M14WE
16	216	24.00	100	67M16WE
18	235	35.00	50	67M18WE
20	257	49.00	25	67M20WE
24	350	67.50	25	67M24WE
30	450	139.00	1	67M30WE
36	570	260.00	1	67M36WE
42	620	365.00	1	67M42WE
52	880	720.00	1	67M52WE

Threaded transport anchor



Version: Short wavy tail, insert bright zinc plated

Type [RD]	Length [mm]	Weight [kg/100 pcs.]	PU [pcs.]	Ref.-No.
12	110	6.00	200	67M12K
14	130	11.00	100	67M14K
16	170	20.00	100	67M16K
18	175	27.00	50	67M18K
20	187	37.00	25	67M20K
24	240	50.00	25	67M24K
30	300	105.00	1	67M30K
36	380	186.00	1	67M36K
42	450	285.00	1	67M42K

Threaded transport anchor



Threaded transport anchor

Version: Straight tail, insert stainless steel (AISI 316)

Type [RD]	Length [mm]	Weight [kg/100 pcs.]	PU [pcs.]	Ref.-No.
12	195	9.00	200	75M12VA
14	235	17.00	100	75M14VA
16	275	28.00	100	75M16VA
18	305	43.00	50	75M18VA
20	355	64.00	25	75M20VA
24	405	76.00	25	75M24VA
30	505	156.00	1	75M30VA
36	690	310.00	1	75M36VA
42	840	467.00	1	75M42VA
52	900	730.00	1	75M52VA

Threaded transport anchor



Version: Long wavy tail, insert stainless steel (AISI 316)

Type [RD]	Length [mm]	Weight [kg/100 pcs.]	PU [pcs.]	Ref.-No.
12	137	7.00	200	75M12VAWE
14	170	14.00	100	75M14VAWE
16	216	24.00	100	75M16VAWE
18	235	35.00	50	75M18VAWE
20	257	49.00	25	75M20VAWE
24	350	67.50	25	75M24VAWE
30	450	139.00	1	75M30VAWE
36	570	260.00	1	75M36VAWE
42	620	365.00	1	75M42VAWE
52	880	720.00	1	75M52VAWE

Threaded transport anchor



Version: Short wavy tail, insert stainless steel (AISI 316)

Type [RD]	Length [mm]	Weight [kg/100 pcs.]	PU [pcs.]	Ref.-No.
12	110	6.00	200	75M12VAK
14	130	11.00	100	75M14VAK
16	170	20.00	100	75M16VAK
18	175	27.00	50	75M18VAK
20	187	37.00	25	75M20VAK
24	240	50.00	25	75M24VAK
30	300	105.00	1	75M30VAK
36	380	186.00	1	75M36VAK
42	450	285.00	1	75M42VAK

Threaded transport anchor



Transport anchor systems

Connection technology

Facade technology

Fixing technology

Noise reduction technology

Earthing technology

Threaded transport anchor

Transport anchor systems

Connection technology

Facade technology

Fixing technology

Noise reduction technology

Earthing technology

Version: Insert bright zinc plated				
Type [RD]	Length [mm]	Weight [kg/100 pcs.]	PU [pcs.]	Ref.-No.
12	100	6.00	200	67K120100
12	150	10.00	200	67K120150
14	105	10.00	100	67K140105
14	155	13.00	100	67K140155
16	130	14.00	100	67K160130
16	175	17.00	100	67K160175
18	150	29.00	50	67K180150
18	225	36.00	50	67K180225
20	185	34.00	50	67K200185
20	250	43.00	50	67K200250
24	200	42.00	50	67K240200
24	275	52.00	25	67K240275
30	275	105.00	25	67K300275
30	350	126.00	1	67K300350
36	334	184.00	1	67K360334
36	450	227.00	1	67K360450
42	385	273.00	1	67K420385
42	500	323.00	1	67K420500
52	550	567.00	1	67K520550
52	700	634.00	1	67K520700

Version: Insert stainless steel (AISI 316)				
Type [RD]	Length [mm]	Weight [kg/100 pcs.]	PU [pcs.]	Ref.-No.
12	100	6.00	200	75K120100VA
12	150	10.00	200	75K120150VA
14	105	10.00	100	75K140105VA
14	155	13.00	100	75K140155VA
16	130	14.00	100	75K160130VA
16	175	17.00	100	75K160175VA
18	150	29.00	50	75K180150VA
18	225	36.00	50	75K180225VA
20	185	34.00	50	75K200185VA
20	250	43.00	50	75K200250VA
24	200	42.00	50	75K240200VA
24	275	52.00	25	75K240275VA
30	275	105.00	25	75K300275VA
30	350	126.00	1	75K300350VA
36	334	184.00	1	75K360334VA
36	450	227.00	1	75K360450VA
42	385	273.00	1	75K420385VA
42	500	323.00	1	75K420500VA
52	550	567.00	1	75K520550VA
52	700	634.00	1	75K520700VA

Compact anchor



Compact anchor



Threaded transport anchor

Insert bright zinc plated

Type [RD]	Length [mm]	Weight [kg/100 pcs.]	PU [pcs.]	Ref.-No.
12	40	2.00	200	71HM12
14	47	4.00	200	71HM14
16	55	6.00	100	71HM16
18	65	11.00	100	71HM18
20	67	13.00	100	71HM20
24	77	18.00	100	71HM24
30	105	43.00	50	71HM30
36	125	70.00	25	71HM36
42	145	106.00	10	71HM42
52	195	224.00	5	71HM52

Version: Stainless steel

Type [RD]	Length [mm]	Weight [kg/100 pcs.]	PU [pcs.]	Ref.-No.
12	40	2.00	100	77HM12VA
14	47	4.00	100	77HM14VA
16	55	7.00	100	77HM16VA
18	65	11.00	100	77HM18VA
20	67	13.00	100	77HM20VA
24	77	25.00	100	77HM24VA
30	105	37.00	50	77HM30VA
36	125	101.00	25	77HM36VA
42	145	139.00	10	77HM42VA
52	195	322.00	5	77HM52VA

Version: Insert special tube, bright zinc plated

Type [RD]	Length [mm]	Weight [kg/100 pcs.]	PU [pcs.]	Ref.-No.
12	60	3.00	500	71Ö12
14	70	6.00	200	71Ö14
16	77	10.00	200	71Ö16
18	85	14.00	100	71Ö18
20	92	20.00	100	71Ö20
24	100	25.00	80	71Ö24
30	140	70.00	50	71Ö30

Version in stainless steel available on request.

Insert bright zinc plated

Type [RD]	Length [mm]	Weight [kg/100 pcs.]	PU [pcs.]	Ref.-No.
12	60	3.50	100	71HM12D
14	70	6.00	100	71HM14D
16	80	10.00	100	71HM16D
18	90	15.00	100	71HM18D
20	95	19.00	50	71HM20D
24	115	28.00	50	71HM24D
30	145	59.00	25	71HM30D
36	175	100.00	25	71HM36D
42	205	159.00	10	71HM42D
52	275	330.00	5	71HM52D

Lifting insert with cross hole



Lifting insert with cross hole



Lifting insert with crimped end



Lifting insert double sided



Transport anchor systems

Connection technology

Facade technology

Fixing technology

Noise reduction technology

Earthing technology

Threaded transport anchor

Transport anchor systems

Connection technology

Facade technology

Fixing technology

Noise reduction technology

Earthing technology

Version: Insert and screw bright zinc plated				
Type [RD]	Length [mm]	Weight [kg/100 pcs.]	PU [pcs.]	Ref.-No.
12	60	4.00	200	67SA12
14	70	7.00	200	67SA14
16	80	12.00	100	67SA16
18	90	22.00	100	67SA18
20	100	26.00	50	67SA20
24	115	41.00	50	67SA24
30	150	72.00	25	67SA30



Version: Insert stainless steel (AISI 316) and screw bright zinc plated				
Type [RD]	Length [mm]	Weight [kg/100 pcs.]	PU [pcs.]	Ref.-No.
12	60	4.00	200	75SA12VA
14	70	7.00	200	75SA14VA
16	80	12.00	100	75SA16VA
18	90	22.00	100	75SA18VA
20	100	26.00	50	75SA20VA
24	115	41.00	50	75SA24VA
30	150	72.00	25	75SA30VA



Version: Insert bright zinc plated				
Type [RD]	Length [mm]	Weight [kg/100 pcs.]	PU [pcs.]	Ref.-No.
12	30	4.50	200	71FL12
14	33	7.00	200	71FL14
16	35	11.00	100	71FL16
18	44	17.50	100	71FL18
20	47	24.00	50	71FL20
24	54	33.00	50	71FL24
30	72	68.00	25	71FL30
36	84	113.00	10	71FL36
42	98	178.00	10	71FL42
52	117	288.00	1	71FL52



Version: Stainless steel (AISI 316)				
Type [RD]	Length [mm]	Weight [kg/100 pcs.]	PU [pcs.]	Ref.-No.
12	30	4.50	200	77FL12VA
14	33	7.00	200	77FL14VA
16	35	11.00	100	77FL16VA
18	44	17.50	100	77FL18VA
20	47	24.00	50	77FL20VA
24	54	33.00	50	77FL24VA
30	72	68.00	25	77FL30VA
36	84	113.00	10	77FL36VA
42	98	178.00	10	77FL42VA
52	117	288.00	1	77FL52VA



Threaded transport anchor

Version: with offset, insert bright zinc plated

Type [RD]	Length [mm]	Weight [kg/100 pcs.]	PU [pc.]	Ref.-No.
16	520	47.50	1	67M16GK
20	550	101.30	1	67M20GK
24	650	117.00	1	67M24GK
30	750	221.00	1	67M30GK
36	950	409.00	1	67M36GK
42	1100	669.00	1	67M42GK
52	1480	1201.00	1	67M52GK

Version: Insert bright zinc plated

Type [RD]	Length [mm]	Weight [kg/100 pcs.]	PU [pc.]	Ref.-No.
30	800	230.00	1	67GA300800
30	900	258.00	1	67GA300900
30	1100	316.00	1	67GA301100
36	800	254.00	1	67GA360800
36	900	277.00	1	67GA360900
36	1100	322.00	1	67GA361100

Version: for threaded transport anchors, insert bright zinc plated

Type [RD]	Length [mm]	PU [pc.]	Ref.-No.
30	as required	1	67AVL30
36	as required	1	67AVL36
42	on request	1	67AVL42
52	on request	1	67AVL52

Threaded transport anchor



Garage anchor



Elongation



Transport anchor systems

Connection technology

Facade technology

Fixing technology

Noise reduction technology

Earthing technology

Threaded transport anchor

Transport anchor systems

Version: Insert bright zinc plated				
Type	Length	Weight	PU	Ref.-No.
[RD]	[mm]	[kg/100 pcs.]	[pcs.]	
12	100	10.70	200	67SKS12100M
12	150	15.10	200	67SKS12150M
16	140	26.40	100	67SKS16140M
16	220	39.00	100	67SKS16220M
20	150	44.80	50	67SKS20150M
20	180	52.20	50	67SKS20180M
20	270	74.40	50	67SKS20270M
24	200	88.00	50	67SKS24200M
24	320	130.60	50	67SKS24320M

Other dimensions on request.

Connection technology

Version: Insert stainless steel (AISI 316)				
Type	Length	Weight	PU	Ref.-No.
[RD]	[mm]	[kg/100 pcs.]	[pcs.]	
12	100	10.70	200	75SKS12100MVA
12	150	15.10	200	75SKS12150MVA
16	140	26.40	100	75SKS16140MVA
16	220	39.00	100	75SKS16220MVA
20	150	44.80	50	75SKS20150MVA
20	180	52.20	50	75SKS20180MVA
20	270	74.40	50	75SKS20270MVA
24	200	88.00	50	75SKS24200MVA
24	320	130.60	50	75SKS24320MVA

Other dimensions on request.

Facade technology

Insert bright zinc plated				
Type	Length	Weight	PU	Ref.-No.
[RD]	[mm]	[kg/100 pcs.]	[pcs.]	
12	55	11.30	100	67SKS12055MFL
16	75	25.00	100	67SKS16075MFL
20	90	45.20	50	67SKS20090MFL
24	110	83.60	50	67SKS24110MFL

Fixing technology

Version: Insert stainless steel (AISI 316)				
Type	Length	Weight	PU	Ref.-No.
[RD]	[mm]	[kg/100 pcs.]	[pcs.]	
12	55	11.30	100	75SKS12055MFLVA
16	75	25.00	100	75SKS16075MFLVA
20	90	45.20	50	75SKS20090MFLVA
24	110	83.60	50	75SKS24110MFLVA

Noise reduction technology

Earthing technology

Hexagonal anchor



Hexagonal anchor



Hexagonal plate anchor



Hexagonal plate anchor



Lifting device

Load direction: 0° - 45°

Type [M/RD]	Length [mm]	Weight [kg/100 pcs.]	PU [pcs.]	Ref.-No. [RD]	Ref.-No. [M]
12	155	6.00	10	69RD12	69M12
14	155	9.50	10	69RD14	69M14
16	165	13.00	10	69RD16	69M16
18	190	19.00	10	69RD18	69M18
20	215	26.00	10	69RD20	69M20
24	255	46.00	5	69RD24	69M24
30	300	88.00	5	69RD30	69M30
36	360	145.00	1	69RD36	69M36
42	425	216.00	1	69RD42	69M42
52	530	450.00	1	69RD52	69M52

Load direction: 0 - 90°

Type [M/RD]	Outer Ø [mm]	Colour	Weight [kg/100 pcs.]	PU [pc.]	Ref.-No.
12	60	Pastel orange	15.00	1	69M12Q90
16	70	Flame red	18.00	1	69M16Q90
20	90	Pastel green	26.00	1	69M20Q90
24	110	Jet black	45.00	1	69M24Q90
30	130	Emerald green	80.00	1	69M30Q90
36	150	Light blue	120.00	1	69M36Q90
42	180	Silver grey	210.00	1	69M42Q90
52	210	Sulfur yellow	300.00	1	69M52Q90

Version: ball bearing, for all load directions

Type [M/RD]	Height [mm]	Weight [kg/pc.]	PU [pc.]	Ref.-No. [RD]	Ref.-No. [M]
12	125	0.50	1	62WS12	62WS12M
14	126	0.55	1	62WS14	62WS14M
16	151	0.66	1	62WS16	62WS16M
18	152	1.38	1	62WS18	62WS18M
20	158	1.54	1	62WS20	62WS20M
24	187	2.10	1	62WS24	62WS24M
30	219	3.73	1	62WS30	62WS30M
36	255	6.29	1	62WS36	62WS36M
42	256	7.12	1	62WS42	62WS42M
52	344	15.30	1	62WS52	62WS52M
56	350	17.30	1	62WS56	-
60	350	17.43	1	62WS60	-

Version: ball bearing, for all load directions

Type [RD]	Height [mm]	Weight [kg/pc.]	PU [pc.]	Ref.-No.
12	125	0.64	1	62WS12KH
14	126	0.73	1	62WS14KH
16	151	0.88	1	62WS16KH
18	152	1.61	1	62WS18KH
20	158	1.91	1	62WS20KH
24	186	2.52	1	62WS24KH
30	219	4.28	1	62WS30KH
36	255	7.03	1	62WS36KH
42	256	8.30	1	62WS42KH
52	344	16.35	1	62WS52KH

Lifting loop with threaded end



Adapter for lateral tension 90°



Wirbelstar



Wirbelstar KH



Transport anchor systems

Connection technology

Facade technology

Fixing technology

Noise reduction technology

Earthing technology

Lifting device

Transport anchor systems

Connection technology

Facade technology

Fixing technology

Noise reduction technology

Earthing technology

Load direction: 0 - 90°					
Type [M/RD]	Height [mm]	Weight [kg/pc.]	PU [pc.]	Ref.-No. [RD]	Ref.-No. [M]
12	150	0.47	1	62L112	62L112M
14	150	0.47	1	62L114	62L114M
16	150	0.48	1	62L116	62L116M
18	162	1.10	1	62L118	62L118M
20	162	1.20	1	62L120	62L120M
24	162	1.30	1	62L124	62L124M
30	177	3.40	1	62L130	62L130M
36	177	3.60	1	62L136	62L136M
42	218	6.80	1	62L142	62L142M
52	218	7.40	1	62L152	62L152M

Load direction: 0 - 90°					
Type [M/RD]	Height [mm]	Weight [kg/pc.]	PU [pc.]	Ref.-No. [RD]	Ref.-No. [M]
12	310	0.38	1	62L112DS	62L112MDS
14	330	0.38	1	62L114DS	62L114MDS
16	345	0.38	1	62L116DS	62L116MDS
18	390	0.88	1	62L118DS	62L118MDS
20	410	0.96	1	62L120DS	62L120MDS
24	435	1.04	1	62L124DS	62L124MDS
30	490	2.72	1	62L130DS	62L130MDS
36	650	4.36	1	62L136DS	62L136MDS
42	700	10.50	1	62L142DS	62L142MDS
52	800	10.50	1	62L152DS	62L152MDS



Accessories

Version: Plastic, colour-coded

Type [M/RD]	Colour	PU [pcs.]	Ref.-No.
12	Pastel orange	100	74KR12
14	Pure white	100	74KR14
16	Flame red	100	74KR16
18	Light pink	100	74KR18
20	Pastel green	100	74KR20
24	Jet black	100	74KR24
30	Emerald green	100	74KR30
36	Light blue	100	74KR36
42	Silver grey	100	74KR42
52	Sulfur yellow	100	74KR52

Version: Plastic, colour-coded, with rebar clip

Type [M/RD]	Colour	PU [pcs.]	Ref.-No.
12	Pastel orange	100	74KR12CLIP
14	Pure white	100	74KR14CLIP
16	Flame red	100	74KR16CLIP
18	Light pink	100	74KR18CLIP
20	Pastel green	100	74KR20CLIP
24	Jet black	100	74KR24CLIP
30	Emerald green	100	74KR30CLIP
36	Light blue	100	74KR36CLIP
42	Silver grey	100	74KR42CLIP
52	Sulfur yellow	100	74KR52CLIP

Version: Plastic, for stainless steel insert, colour-coded, with rebar clip

Type [M/RD]	Colour	PU [pcs.]	Ref.-No.
24	Jet black	100	74KR24CLIPVA
30	Emerald green	100	74KR30CLIPVA
36	Light blue	100	74KR36CLIPVA

Marking ring



Marking ring



Marking ring



Transport anchor systems

Connection technology

Facade technology

Fixing technology

Noise reduction technology

Earthing technology

Accessories

Transport anchor systems

Connection technology

Facade technology

Fixing technology

Noise reduction technology

Earthing technology

Version: Plastic					
Type [M/RD]	Outer Ø [mm]	Height [mm]	Colour	PU [pcs.]	Ref.-No.
12	40	10	Pastel orange	100	72KHN12
14	40	10	Pure white	100	72KHN14
16	40	10	Flame red	100	72KHN16
16	55	10	Flame red	100	72KHN16-G (1)
18	55	10	Light pink	100	72KHN18
20	55	10	Pastel green	100	72KHN20
24	55	10	Jet black	100	72KHN24
30	70	10	Emerald green	100	72KHN30
36	70	10	Light blue	100	72KHN36
42	96	12	Silver grey	50	72KHN42
52	96	12	Sulfur yellow	50	72KHN52

Cannot be combined with Lifty (Page 14)

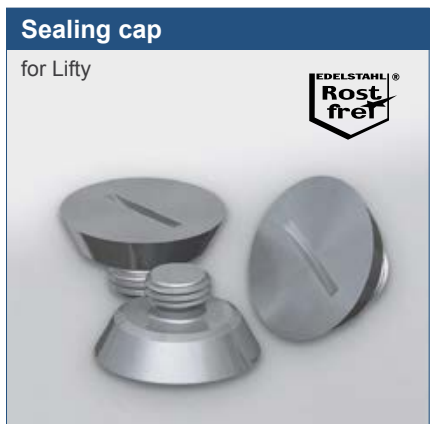
Version: Steel, bright zinc plated, conical					
Type [M/RD]	Outer Ø [mm]	Height [mm]	Weight [kg/100 pcs.]	PU [pc.]	Ref.-No.
12	40	10	7.36	1	72KHN12STK
14	40	10	7.82	1	72KHN14STK
16	40	10	8.07	1	72KHN16STK
18	55	10	16.61	1	72KHN18STK
20	55	10	17.69	1	72KHN20STK
24	55	10	19.03	1	72KHN24STK
30	70	10	36.81	1	72KHN30STK
36	70	10	45.57	1	72KHN36STK
42	96	12	94.38	1	72KHN42STK
52	96	12	132.43	1	72KHN52STK

Version: Steel, bright zinc plated, conical						
Type [M/RD]	Outer Ø [mm]	Height [mm]	Adhesion [kg]	Weight [kg/100 pcs.]	PU [pc.]	Ref.-No.
12	40	10	60	8.81	1	72MAXKHN12
14	40	10	60	9.28	1	72MAXKHN14
16	40	10	60	9.85	1	72MAXKHN16
16	55	10	100	10.33	1	72MAXKHN16-G (1)
18	55	10	100	19.28	1	72MAXKHN18
20	55	10	100	20.21	1	72MAXKHN20
24	55	10	100	22.33	1	72MAXKHN24
30	70	10	180	36.92	1	72MAXKHN30
36	70	10	180	41.74	1	72MAXKHN36
42	96	12	180	85.92	1	72MAXKHN42
52	96	12	180	99.00	1	72MAXKHN52

Cannot be combined with Lifty (Page 14)

Version: Sealing cap (stainless steel with slot)					
Type [M/RD]	Outer-Ø [mm]	Height [mm]	PU [pc.]	Ref.-No.	
12	40	10	1	72ASKHN12VA-S	
14	40	10	1	72ASKHN14VA-S	
16	40	10	1	72ASKHN16VA-S	
16	55	10	1	72ASKHN16-GVA-S	
18	55	10	1	72ASKHN18VA-S	
20	55	10	1	72ASKHN20VA-S	
24	55	10	1	72ASKHN24VA-S	
30	70	10	1	72ASKHN30VA-S	
36	70	10	1	72ASKHN36VA-S	
42	96	12	1	72ASKHN42VA-S	
52	96	12	1	72ASKHN52VA-S	

Also available with hexagon socket.



Accessories

Version: Plastic

Type [M/RD]	Outer Ø [mm]	Height [mm]	Colour	PU [pc.]	Ref.-No.
36	105	12	Light blue	1	72KHN36WS
42	115	15	Silver grey	1	72KHN42WS
52	135	15	Sulfur yellow	1	72KHN52WS

Version: Steel, bright zinc plated, conical

Type [M/RD]	Outer Ø [mm]	Height [mm]	Weight [kg/100 pcs.]	PU [pc.]	Ref.-No.
12	51	10	14.00	1	72SAT12K
14	56	10	18.00	1	72SAT14K
16	60	10	21.00	1	72SAT16K
18	63	10	23.00	1	72SAT18K
20	74	10	34.00	1	72SAT20K
24	78	12	45.00	1	72SAT24K
30	94	12	72.00	1	72SAT30K
36	105	12	93.00	1	72SAT36K
42	115	15	142.00	1	72SAT42K
52	135	15	220.00	1	72SAT52K
56	155	18	329.00	1	72SAT56K
60	155	18	344.00	1	72SAT60K

Version: Steel, bright zinc plated, conical

Type [M/RD]	Outer Ø [mm]	Height [mm]	Weight [kg/100 pcs.]	PU [pc.]	Ref.-No.
12	51	12	15.00	1	72SATM12K
14	56	12	17.00	1	72SATM14K
16	60	15	26.00	1	72SATM16K
18	63	15	28.00	1	72SATM18K
20	74	15	35.00	1	72SATM20K
24	78	15	45.00	1	72SATM24K
30	94	15	72.00	1	72SATM30K
36	105	15	99.00	1	72SATM36K
42	115	15	124.00	1	72SATM42K
52	135	15	189.00	1	72SATM52K

Nailing plate

for Wirbelstar



Recess former

for Wirbelstar



Magnetic recess former

for Wirbelstar



Transport anchor systems

Connection technology

Facade technology

Fixing technology

Noise reduction technology

Earthing technology

Accessories

Transport anchor systems

Version: Plastic				
Type [M/RD]	Outer Ø [mm]	Weight [kg/100 pcs.]	PU [pcs.]	Ref.-No.
12	27	0.47	100	72KH12
14	27	0.51	100	72KH14
16	27	0.58	100	72KH16
18	27	0.64	100	72KH18
20	27	0.73	100	72KH20
24	27	0.89	100	72KH24

Retaining cap KH



Connection technology

Version: Steel				
Type [M/RD]	Outer Ø [mm]	Weight [kg/100 pcs.]	PU [pc.]	Ref.-No.
12	27	7.00	1	72KH12STAHL
14	27	8.00	1	72KH14STAHL
16	27	9.00	1	72KH16STAHL
18	27	9.00	1	72KH18STAHL
20	27	9.00	1	72KH20STAHL
24	27	11.00	1	72KH24STAHL
30	48	27.00	1	72KH30STAHL
36	48	31.00	1	72KH36STAHL
42	48	39.50	1	72KH42STAHL
52	65	89.50	1	72KH52STAHL

Retaining cap KH



Facade technology

Version: Steel				
Type [M/RD]	Outer Ø [mm]	Weight [kg/100 pcs.]	PU [pc.]	Ref.-No.
12	27	5.70	1	72MAXKH12ST
16	27	6.90	1	72MAXKH16ST
20	27	8.30	1	72MAXKH20ST
24	27	10.00	1	72MAXKH24ST
30	48	28.00	1	72MAXKH30ST
36	48	31.10	1	72MAXKH36ST
42	48	44.20	1	72MAXKH42ST
52	65	89.70	1	72MAXKH52ST

Magnetic recess former KH



Fixing technology

Version: Plastic, concrete grey, flush with concrete surface				
Type	Outer Ø [mm]	Weight [kg/100 pcs.]	PU [pcs.]	Ref.-No.
12 - 24	27	0.30	100	72ASO1224PLAN
30 - 42	48	0.80	100	72ASO3042PLAN
52	65	1.80	100	72ASO52PLAN

Sealing cap KH



for retaining caps 72KH_, 72KH_STAHL and 72MAXKH_ST

Version: Plastic, concrete grey, with flange				
Type	Outer Ø [mm]	Weight [kg/100 pcs.]	PU [pcs.]	Ref.-No.
12 - 24	34	0.34	100	72ASO

for retaining caps 72KH_ and 72MAXKH_ST

Noise reduction technology

Earthing technology

Accessories

Version: Stainless steel

Type [M/RD]	Outer Ø [mm]	Weight [kg/100 pcs.]	PU [pc.]	Ref.-No.
12	27	10.00	1	72ASO12VA-S
14	27	10.10	1	72ASO14VA-S
16	27	10.20	1	72ASO16VA-S
18	27	10.30	1	72ASO18VA-S
20	27	10.40	1	72ASO20VA-S
24	27	10.50	1	72ASO24VA-S
30	48	35.00	1	72ASO30VA-S
36	48	40.00	1	72ASO36VA-S
42	48	42.00	1	72ASO42VA-S
52	65	77.00	1	72ASO52VA-S

Version: Stainless steel, independent from threat size

Type	Outer Ø [mm]	Weight [kg/100 pcs.]	PU [pc.]	Ref.-No.
12 - 24	27	4.30	1	72ASO1224VA
30 - 42	48	17.20	1	72ASO3042VA
52	65	39.70	1	72ASO52VA

Angled keys for Retaining cap KH

Type	Weight [kg/pc.]	PU [pc.]	Ref.-No.
12 - 24	0.34	1	67WS

Key for Magnetic recess former KH (72MAXKH ST)

Type	Weight [kg/pc.]	PU [pc.]	Ref.-No.
30 - 52	0.22	1	67MAXKHST-S3042

Sealing cap KH



Sealing cap KH



Angled key



Key



Transport anchor systems

Connection technology

Facade technology

Fixing technology

Noise reduction technology

Earthing technology

Accessories

Transport anchor systems

Connection technology

Facade technology

Fixing technology

Noise reduction technology

Earthing technology

Version: Steel, bright zinc plated					
Type [M/RD]	Internal thread [M]	Height [mm]	Weight [kg/100 pcs.]	PU [pc.]	Ref.-No.
12	6	16.0	1.00	1	72GST1206VC
14	6	16.0	2.00	1	72GST1406VC
16	8	16.0	2.00	1	72GST1608VC
18	8	16.0	3.00	1	72GST1808VC
20	8	16.0	3.00	1	72GST2008VC
24	10	16.0	5.00	1	72GST2410VC
30	10	16.0	8.00	1	72GST3010VC
36	10	16.0	11.00	1	72GST3610VC
42	10	16.0	16.00	1	72GST4210VC
52	10	16.0	25.00	1	72GST5210VC

Version: Steel, bright zinc plated					
Type [M/RD]	Outer Ø [mm]	Height [mm]	Adhesion [kg]	PU [pc.]	Ref.-No.
12	54	15	105	1	72MAX12SI
14	54	15	105	1	72MAX14SI
16	54	15	105	1	72MAX16SI
18	54	15	105	1	72MAX18SI
20	54	15	105	1	72MAX20SI
24	54	15	105	1	72MAX24SI
30	54	15	105	1	72MAX30SI
36	54	15	105	1	72MAX36SI

Version: Steel, bright zinc plated					
Type [M/RD]	Outer Ø [mm]	Height [mm]	Adhesion [kg]	PU [pc.]	Ref.-No.
12	68	18	190	1	72MAX12SGI
14	68	18	190	1	72MAX14SGI
16	68	18	190	1	72MAX16SGI
18	68	18	190	1	72MAX18SGI
20	68	18	190	1	72MAX20SGI
24	68	18	190	1	72MAX24SGI
30	68	18	190	1	72MAX30SGI
36	68	18	190	1	72MAX36SGI

Version: Steel, bright zinc plated					
Type [M/RD]	Outer Ø [mm]	Height [mm]	Weight [kg/100 pcs.]	PU [pc.]	Ref.-No.
12	22	6.0	2.00	1	72FS12
14	24	6.0	3.00	1	72FS14
16	26	6.0	4.00	1	72FS16
18	28	6.0	5.00	1	72FS18
20	30	6.0	6.00	1	72FS20
24	40	7.5	12.00	1	72FS24
30	46	7.5	22.00	1	72FS30
36	57	7.5	36.00	1	72FS36
42	60	9.0	54.00	1	72FS42
52	73	9.0	99.00	1	72FS52



Accessories

Version: Plastic, grey

Type [M/RD]	Weight [kg/100 pc.]	PU [pcs.]	Ref.-No.
12	0.06	100	72ASS12
14	0.11	100	72ASS14
16	0.14	100	72ASS16
18	0.19	100	72ASS18
20	0.29	100	72ASS20
24	0.38	100	72ASS24
30	0.53	100	72ASS30
36	0.73	100	72ASS36
42	0.96	100	72ASS42
52	1.33	100	72ASS52

Version: Plastic, transparent

Type [M/RD]	Weight [kg/100 pcs.]	PU [pcs.]	Ref.-No.
12	0.07	100	72KAS12
14	0.07	100	72KAS14
16	0.09	100	72KAS16
18	0.11	100	72KAS18
20	0.14	100	72KAS20
24	0.21	100	72KAS24
30	0.40	100	72KAS30
36	0.40	100	72KAS36
42	0.63	100	72KAS42
52	0.69	100	72KAS52
56	0.67	100	72KAS56
60	0.73	100	72KAS60

Version: Hardened, for cleaning threads

Type [M/RD]	Weight [kg/100 pcs.]	PU [pc.]	Ref.-No.
12	4.00	1	61NAS12
14	7.00	1	61NAS14
16	10.00	1	61NAS16
18	13.00	1	61NAS18
20	18.00	1	61NAS20
24	33.00	1	61NAS24
30	63.00	1	61NAS30
36	103.00	1	61NAS36
42	146.00	1	61NAS42
52	289.00	1	61NAS52

Outside retaining cap



Sealing cap



Chaser screw



Transport anchor systems

Connection technology

Facade technology

Fixing technology

Noise reduction technology

Earthing technology

Power System SL

Version: Straight, insert bright zinc plated, left hand thread					
Type	Thread [M-LH]	Length [mm]	Weight [kg/100 pcs.]	PU [pc.]	Ref.-No.
2.0	16	455	44.00	1	67M16SL
5.0	24	580	153.00	1	67M24SL
8.0	30	750	320.00	1	67M30SL
14.5	42	1100	695.00	1	67M42SL
20.0	52	1200	1296.00	1	67M52SL



Load direction: 0 - 90°, left hand thread					
Type	Thread [M-LH]	Height [mm]	Weight [kg/pc.]	PU [pc.]	Ref.-No.
2.0	16	150	0.48	1	62LISL16
5.0	24	162	1.30	1	62LISL24
8.0	30	177	3.40	1	62LISL30
14.5	42	218	6.80	1	62LISL42
20.0	52	218	7.40	1	62LISL52



Version: Plastic, colour-coded, with rebar clip					
Type	Thread [M-LH]	Colour	PU [pcs.]	Ref.-No.	
2.0	16	Signal blue	100	74KR16CLIPSL	
5.0	24	Signal yellow	100	74KR24CLIPSL	
8.0	30	Clay brown	100	74KR30CLIPSL	
14.5	42	Salmon orange	100	74KR42CLIPSL	
20.0	52	Emerald green	100	74KR52CLIPSL	



Version: Plastic					
Type	Thread [M-LH]	Outer Ø [mm]	Colour	PU [pcs.]	Ref.-No.
2.0	16	40	Signal blue	100	72KHN16SL
5.0	24	55	Signal yellow	100	72KHN24SL
8.0	30	70	Clay brown	100	72KHN30SL
14.5	42	96	Salmon orange	100	72KHN42SL
20.0	52	96	Emerald green	100	72KHN52SL



Transport loop system

Consisting of: Transport loop, transport loop anchor, hexagon screw grade 8.8

Type [M/RD]	Length [mm]	Weight [kg/100 pcs.]	PU [pc.]	Ref.-No.
16	300	79.00	1	67TPSS122000
24	330	172.00	1	67TPSS154000
30	400	343.00	1	67TPSS185200
36	525	434.00	1	67TPSS206300

Consisting of: Transport loop, hexagon screw grade 8.8

Type [M/RD]	Length [mm]	Weight [kg/100 pcs.]	PU [pc.]	Ref.-No.
16	300	66.00	1	67TPS122000S
24	330	134.00	1	67TPS154000S
30	400	242.00	1	67TPS185200S
36	525	321.00	1	67TPS206300S

Version: Insert bright zinc plated

Type [M/RD]	Length [mm]	Weight [kg/100 pcs.]	PU [pcs.]	Ref.-No.
16	95	12.00	100	67TPSA16
24	110	38.00	50	67TPSA24
30	120	101.00	25	67TPSA30
36	84	113.00	10	71FL36

Hexagon screw grade 8.8

Thread [M]	Length [mm]	PU [pc.]	Ref.-No.
16	30	1	67S1630
24	40	1	67S2440
30	60	1	67S3060
36	80	1	67S36080V

Transport loop system



Transport loop



Transport loop anchor



Fixing screw



Transport anchor systems

Connection technology

Facade technology

Fixing technology

Noise reduction technology

Earthing technology

PHILIPP Spherical head anchor system



Content

■ Spherical head transport anchor	Page 26/27
■ Spherical head transport anchor - with offset	Page 27
■ Spherical head transport anchor - straight tail	Page 27
■ Spherical head transport anchor - double-headed	Page 28
■ Spherical head transport anchor - flat steel	Page 28
■ Spherical head double-head anchor	Page 28
■ Spherical head lifting clutch	Page 28
■ PVC recess former	Page 29
■ Stamped part with internal thread	Page 29
■ Stamped part with threaded rod	Page 29
■ Steel recess former	Page 30
■ Steel recess former for opening	Page 30
■ Magnetic recess former	Page 30
■ Rubber ring	Page 31

Transport anchor systems

Connection technology

Facade technology

Fixing technology

Noise reduction technology

Earthing technology

Spherical head transport anchor

Version: black steel				
Type	Length [mm]	Weight [kg/100 pcs.]	PU [pcs.]	Ref.-No.
1.3	40	5.00	300	81 -013-040
1.3	50	5.00	300	81 -013-050
1.3	65	6.00	300	81 -013-065
1.3	85	7.00	200	81 -013-085
1.3	120	10.00	100	81 -013-120
1.3	240	17.00	100	81 -013-240
2.5	45	12.00	200	81 -025-045
2.5	55	13.00	200	81 -025-055
2.5	65	13.00	200	81 -025-065
2.5	85	16.00	100	81 -025-085
2.5	100	18.00	100	81 -025-100
2.5	120	20.00	100	81 -025-120
2.5	140	23.00	100	81 -025-140
2.5	170	26.00	100	81 -025-170
2.5	280	40.00	50	81 -025-280
4.0	75	28.00	50	81 -040-075
4.0	100	33.00	50	81 -040-100
4.0	120	37.00	50	81 -040-120
4.0	150	43.00	50	81 -040-150
4.0	170	46.00	50	81 -040-170
4.0	210	54.00	50	81 -040-210
4.0	240	61.00	25	81 -040-240
4.0	340	81.00	20	81 -040-340
4.0	420	110.00	20	81 -040-420
5.0	55	28.00	50	81 -050-055
5.0	65	31.00	50	81 -050-065
5.0	75	33.00	50	81 -050-075
5.0	85	34.00	50	81 -050-085
5.0	95	38.00	50	81 -050-095
5.0	110	42.00	50	81 -050-110
5.0	120	44.00	50	81 -050-120
5.0	140	50.00	50	81 -050-140
5.0	160	55.00	50	81 -050-160
5.0	180	59.00	50	81 -050-180
5.0	240	75.00	25	81 -050-240
5.0	340	99.00	20	81 -050-340
5.0	480	135.00	1	81 -050-480
7.5	85	62.00	25	81 -075-085
7.5	95	64.00	25	81 -075-095
7.5	100	67.00	25	81 -075-100
7.5	120	71.00	25	81 -075-120
7.5	140	78.00	25	81 -075-140
7.5	165	89.00	25	81 -075-165
7.5	200	102.00	20	81 -075-200
7.5	300	136.00	20	81 -075-300
7.5	540	221.00	1	81 -075-540
7.5	680	273.00	1	81 -075-680
10.0	115	91.00	20	81 -100-115
10.0	120	93.00	20	81 -100-120
10.0	135	100.00	20	81 -100-135
10.0	150	107.00	20	81 -100-150
10.0	170	119.00	20	81 -100-170
10.0	200	131.00	20	81 -100-200
10.0	220	142.00	20	81 -100-220
10.0	250	155.00	20	81 -100-250
10.0	340	201.00	10	81 -100-340
10.0	680	365.00	1	81 -100-680



Spherical head transport anchor

Transport anchor systems

Connection technology

Facade technology

Fixing technology

Noise reduction technology

Earthing technology

Available also as electro-galvanised b.z.p. or hot-dip galvanised h.d.g. version.

Spherical head transport anchor

Version: black steel

Type	Length [mm]	Weight [kg/100 pcs.]	PU [pcs.]	Ref.-No.
15.0	140	187.00	1	81 -150-140
15.0	165	201.00	1	81 -150-165
15.0	200	228.00	1	81 -150-200
15.0	300	299.00	1	81 -150-300
15.0	400	369.00	1	81 -150-400
15.0	840	700.00	1	81 -150-840
20.0	165	259.00	1	81 -200-165
20.0	200	280.00	1	81 -200-200
20.0	250	322.00	1	81 -200-250
20.0	340	402.00	1	81 -200-340
20.0	500	548.00	1	81 -200-500
20.0	1000	1092.00	1	81 -200-1000
32.0	200	586.00	1	81 -320-200
32.0	250	652.00	1	81 -320-250
32.0	280	708.00	1	81 -320-280
32.0	320	740.00	1	81 -320-320
32.0	700	1330.00	1	81 -320-700
32.0	1200	2134.00	1	81 -320-1200

Available also as electro-galvanised b.z.p. or hot-dip galvanised h.d.g. version.

Version: with offset, black steel

Type	Length [mm]	Weight [kg/100 pcs.]	PU [pcs.]	Ref.-No.
1.3	227	17.00	100	81-013-227GK
2.5	268	41.00	50	81-025-268GK
4.0	406	97.00	1	81-040-406GK
5.0	466	134.00	1	81-050-466GK
7.5	664	272.00	1	81-075-664GK
10.0	664	364.00	1	81-100-664GK
15.0	825	686.00	1	81-150-825GK
20.0	986	997.00	1	81-200-986GK

Available also as electro-galvanised b.z.p. or hot-dip galvanised h.d.g. version.

Version: Rod anchor, black steel

Type	Length [mm]	Weight [kg/100 pcs.]	PU [pc.]	Ref.-No.
2.5	400	51.00	1	81-025-400ST
2.5	520	66.00	1	81-025-520ST
4.0	510	108.00	1	81-040-510ST
4.0	720	150.00	1	81-040-720ST
4.0	1150	226.00	1	81-040-1150ST
5.0	580	151.00	1	81-050-580ST
5.0	900	230.00	1	81-050-900ST
7.5	750	265.00	1	81-075-750ST
7.5	1150	419.00	1	81-075-1150ST
10.0	870	442.00	1	81-100-870ST
10.0	1300	650.00	1	81-100-1300ST
15.0	1080	940.00	1	81-150-1080ST
15.0	1550	1280.00	1	81-150-1550ST

Available also as electro-galvanised b.z.p. or hot-dip galvanised h.d.g. version.

Spherical head transport anchor



Spherical head transport anchor



Spherical head transport anchor



Transport anchor systems

Connection technology

Facade technology

Fixing technology

Noise reduction technology

Earthing technology

Spherical head transport anchors / Lifting device

Transport anchor systems

Version: Double headed, black steel				
Type	Length [mm]	Weight [kg/100 pcs.]	PU [pc.]	Ref.-No.
1.3	65	8.00	1	81-013-065MA
1.3	85	8.00	1	81-013-085MA
2.5	65	13.00	1	81-025-065MA
2.5	85	16.00	1	81-025-085MA
2.5	120	21.00	1	81-025-120MA

Available also as electro-galvanised b.z.p.

Spherical head transport anchor



Connection technology

Version: Flat steel, black steel					
Type	Length [mm]	Plate [mm]	Weight [kg/100 pcs.]	PU [pc.]	Ref.-No.
2.5	55	70x70x6	32.10	1	81-025-055FL
2.5	120	70x70x6	40.00	1	81-025-120FL
5.0	55	90x90x8	71.30	1	81-050-055FL
5.0	65	90x90x8	73.70	1	81-050-065FL
5.0	110	90x90x8	84.80	1	81-050-110FL
10.0	115	90x90x10	137.80	1	81-100-115FL

Available also as electro-galvanised b.z.p.

Spherical head transport anchor



Facade technology

Version: Double-head, black steel				
Type	Length [mm]	Weight [kg/pc.]	PU [pc.]	Ref.-No.
10.0	340	1.90	1	81-100-340D
15.0	400	3.69	1	81-150-400D
20.0	500	5.50	1	81-200-500D
32.0	700	13.55	1	81-320-700D

Available also as electro-galvanised b.z.p.

Spherical head transport anchor



Fixing technology

Version: electro-galvanised			
Type	Weight [kg/pc.]	PU [pc.]	Ref.-No.
1.3	0.85	1	80-HKD-013
2.5	1.60	1	80-HKD-025
5.0	3.34	1	80-HKD-050
10.0	9.34	1	80-HKD-100
20.0	22.70	1	80-HKD-200
32.0	43.50	1	80-HKD-320

Spherical head lifting clutch



Noise reduction technology

Earthing technology

Accessories

Version: PVC, complete with steel parts

Type	Weight [kg/100 pcs.]	PU [pc.]	Ref.-No.
1.3	9.00	1	83-AKK-013
2.5	18.00	1	83-AKK-025
5.0	29.00	1	83-AKK-050
7.5	53.00	1	83-AKK-075
10.0	55.00	1	83-AKK-100
15.0	136.00	1	83-AKK-150
20.0	136.00	1	83-AKK-200
32.0	360.00	1	83-AKK-320

Version: PVC, without steel parts

Type	Weight [kg/100 pcs.]	PU [pc.]	Ref.-No.
1.3	9.00	1	83-AKO-013
2.5	11.00	1	83-AKO-025
5.0	19.00	1	83-AKO-050
7.5	38.00	1	83-AKO-075
10.0	38.00	1	83-AKO-100
15.0	109.00	1	83-AKO-150
20.0	109.00	1	83-AKO-200
32.0	310.00	1	83-AKO-320

Version: Steel

Type	Thread [M]	Weight [kg/100 pcs.]	PU [pc.]	Ref.-No.
1.3	8	1.00	1	83-SIG-013
2.5	10	1.80	1	83-SIG-025
5.0	10	2.60	1	83-SIG-050
7.5	10	3.90	1	83-SIG-075
10.0	12	3.90	1	83-SIG-100
20.0	12	6.30	1	83-SIG-200

Version: Steel

Type	Thread [M]	Weight [kg/100 pcs.]	PU [pc.]	Ref.-No.
1.3	8	4.00	1	83-SGS-013
2.5	10	9.00	1	83-SGS-025
5.0	10	10.00	1	83-SGS-050
7.5	10	17.00	1	83-SGS-075
10.0	12	17.00	1	83-SGS-100
20.0	12	23.00	1	83-SGS-200

Recess former



Recess former



Stamped parts with internal thread



Stamped parts with threaded rod



Transport anchor systems

Connection technology

Facade technology

Fixing technology

Noise reduction technology

Earthing technology

Accessories

Transport anchor systems

Version: Steel				
Type	Thread [M]	Weight [kg/100 pcs.]	PU [pc.]	Ref.-No.
1.3	8	39.00	1	83-AKS-013
2.5	12	69.00	1	83-AKS-025
5.0	12	140.00	1	83-AKS-050



Connection technology

Version: Steel (to be opened)				
Type	Thread [M]	Weight [kg/100 pcs.]	PU [pc.]	Ref.-No.
1.3	8	36.00	1	83-AKA-013
2.5	10	67.00	1	83-AKA-025



Facade technology

Version: Steel				
Type	Thread [M]	Weight [kg/100 pcs.]	PU [pc.]	Ref.-No.
1.3	8	40.00	1	83-AKM-013
2.5	10	64.00	1	83-AKM-025
5.0	10	132.00	1	83-AKM-050
7.5	10	269.00	1	83-AKM-075



Fixing technology

Noise reduction technology

Earthing technology

Accessories

Version: Rubber

Type	Weight [kg/100 pcs.]	PU [pc.]	Ref.-No.
1.3	0.40	1	83-GMS-013
2.5	0.90	1	83-GMS-025
5.0	1.40	1	83-GMS-050
7.5	2.20	1	83-GMS-075

Rubber ring

for Steel- and Magnetic recess former



Transport anchor systems

Connection technology

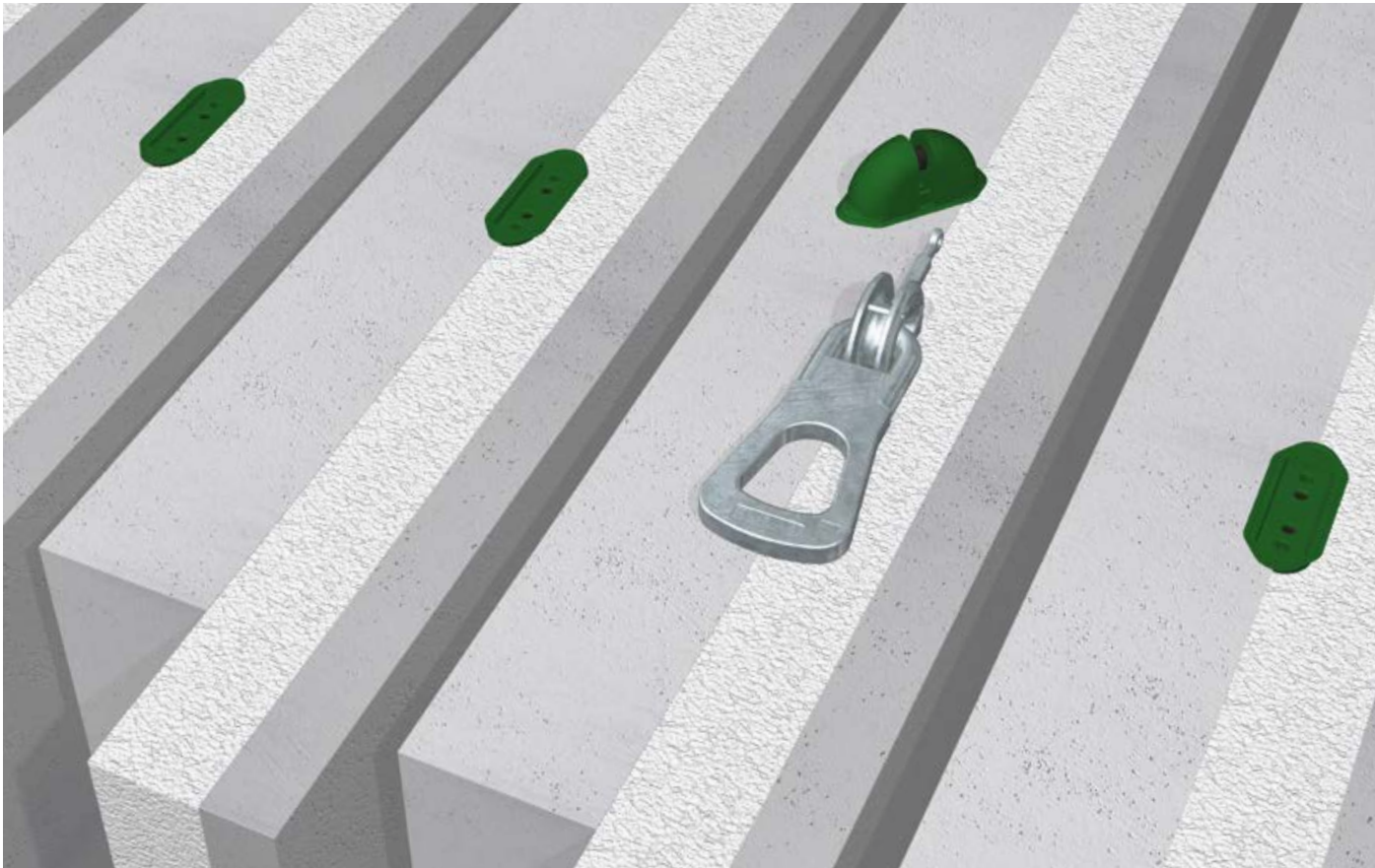
Facade technology

Fixing technology

Noise reduction technology

Earthing technology

PHILIPP Hole anchor system



Content

■ Spread anchor	Page	34
■ Two hole anchor	Page	34
■ Erection anchor both-sided	Page	34
■ Erection anchor one-sided	Page	35
■ Plate anchor	Page	35
■ Flat foot anchor	Page	35
■ Sandwich panel anchor	Page	35
■ Double ended column anchor	Page	36
■ Universal anchor	Page	36
■ Ring clutch	Page	37
■ Ring clutch with wire rope	Page	37
■ PVC recess former	Page	37

Transport anchor systems

Connection technology

Facade technology

Fixing technology

Noise reduction technology

Earthing technology

Hole anchor

Transport anchor systems

Connection technology

Facade technology

Fixing technology

Noise reduction technology

Earthing technology

Version: black steel				
Type	Length [mm]	Weight [kg/pc.]	PU [pc.]	Ref.-No.
1.4	110	0.14	1	48SA014110
2.5	150	0.30	1	48SA025150
2.5	200	0.44	1	48SA025200
2.5	250	0.55	1	48SA025250
3.0	160	0.45	1	48SA030160
3.0	200	0.58	1	48SA030200
3.0	280	0.84	1	48SA030280
4.0	180	0.62	1	48SA040180
4.0	240	0.84	1	48SA040240
5.0	180	0.78	1	48SA050180
5.0	240	1.05	1	48SA050240
7.5	260	1.80	1	48SA075260
7.5	300	2.11	1	48SA075300
10.0	300	2.64	1	48SA100300
10.0	370	3.26	1	48SA100370
14.0	370	3.95	1	48SA140370
14.0	460	5.33	1	48SA140460
22.0	500	7.59	1	48SA220500

Available also as electro-galvanised b.z.p. or hot-dip galvanised h.d.g. version.

Version: black steel				
Type	Length [mm]	Weight [kg/pc.]	PU [pc.]	Ref.-No.
1.4	90	0.09	1	48ZA014090
2.5	90	0.17	1	48ZA025090
3.0	120	0.30	1	48ZA030120
4.0	120	0.37	1	48ZA040120
5.0	120	0.45	1	48ZA050120
7.5	160	0.96	1	48ZA075160
10.0	165	1.19	1	48ZA100165
14.0	240	2.56	1	48ZA140240
22.0	300	4.08	1	48ZA220300

Available also as electro-galvanised b.z.p. or hot-dip galvanised h.d.g. version.

Version: black steel				
Type	Length [mm]	Weight [kg/pc.]	PU [pc.]	Ref.-No.
1.4	200	0.37	1	48AB014200
2.5	230	0.69	1	48AB025230
4.0	270	1.30	1	48AB040270
5.0	290	1.66	1	48AB050290
7.5	320	2.42	1	48AB075320
10.0	390	3.95	1	48AB100390
12.5	500	6.64	1	48AB125500
17.0	500	8.18	1	48AB170500
22.0	500	9.84	1	48AB220500

Available also as electro-galvanised b.z.p. or hot-dip galvanised h.d.g. version.

Spread anchor



Two hole anchor



Erection anchor, double-sided



Hole anchor

Version: black steel

Type	Length [mm]	Weight [kg/pc.]	PU [pc.]	Ref.-No.
1.4	200	0.33	1	48AE014200
2.5	230	0.66	1	48AE025230
4.0	270	1.24	1	48AE040270
5.0	290	1.65	1	48AE050290
7.5	320	3.77	1	48AE075320
10.0	390	4.34	1	48AE100390
12.5	500	6.00	1	48AE125500
17.0	500	7.32	1	48AE170500
22.0	500	8.98	1	48AE220500

Available also as electro-galvanised b.z.p. or hot-dip galvanised h.d.g. version.

Version: black steel

Type	Height [mm]	Weight [kg/pc.]	PU [pc.]	Ref.-No.
1.4	55	0.49	1	48PA014050
2.5	80	0.55	1	48PA025080
5.0	120	1.26	1	48PA050120
10.0	160	3.15	1	48PA100160

Available also as electro-galvanised b.z.p. or hot-dip galvanised h.d.g. version.

Version: black steel

Type	Length [mm]	Weight [kg/pc.]	PU [pc.]	Ref.-No.
0.7	65	0.10	1	48FF007065
1.4	65	0.11	1	48FF014065
2.0	70	0.18	1	48FF020070
2.5	75	0.22	1	48FF025075
3.0	90	0.34	1	48FF030090
4.0	110	0.36	1	48FF040110
5.0	125	0.98	1	48FF050125
7.5	170	1.51	1	48FF075170
10.0	200	2.06	1	48FF100200
12.5	220	2.75	1	48FF125220
17.0	270	3.90	1	48FF170270
22.0	310	5.75	1	48FF220310

Available also as electro-galvanised b.z.p. or hot-dip galvanised h.d.g. version.

Version: black steel

Type	Length [mm]	Weight [kg/pc.]	PU [pc.]	Ref.-No.
2.5	250	0.75	1	48SW025250
5.0	300	1.98	1	48SW050300
7.5	350	2.96	1	48SW075350
10.0	350	3.79	1	48SW100350
17.0	400	7.75	1	48SW170400

Available also as electro-galvanised b.z.p. or hot-dip galvanised h.d.g. version.

Erection anchor, one-sided



Plate anchor



Flat feed anchor



Sandwich panel anchor



Transport anchor systems

Connection technology

Facade technology

Fixing technology

Noise reduction technology

Earthing technology

Hole anchor

Transport anchor systems

Connection technology

Facade technology

Fixing technology

Noise reduction technology

Earthing technology

Version: black steel				
Type	Length [mm]	Weight [kg/pc.]	PU [pc.]	Ref.-No.
2.5	228	0.45	1	48DK025228
2.5	278	0.58	1	48DK025278
2.5	328	0.68	1	48DK025328
5.0	226	0.86	1	48DK050226
5.0	276	1.09	1	48DK050276
5.0	326	1.36	1	48DK050326
5.0	376	1.57	1	48DK050376
5.0	426	1.81	1	48DK050426
5.0	476	2.04	1	48DK050476
7.5	262	1.56	1	48DK075262
7.5	312	1.93	1	48DK075312
7.5	362	2.33	1	48DK075362
7.5	412	2.67	1	48DK075412
7.5	462	3.13	1	48DK075462
10.0	262	1.94	1	48DK100262
10.0	312	2.52	1	48DK100312
10.0	362	2.91	1	48DK100362
10.0	412	3.41	1	48DK100412
10.0	462	3.83	1	48DK100462
12.5	362	2.94	1	48DK125362
12.5	412	3.43	1	48DK125412
12.5	462	3.77	1	48DK125462
17.0	362	3.80	1	48DK170362
17.0	412	4.02	1	48DK170412
17.0	462	4.81	1	48DK170462
22.0	412	5.42	1	48DK220412
22.0	462	6.13	1	48DK220462
22.0	562	7.86	1	48DK220562

Available also as electro-galvanised b.z.p. or hot-dip galvanised h.d.g. version.

Version: black steel				
Type	Length [mm]	Weight [kg/pc.]	PU [pc.]	Ref.-No.
1.3	120	0.15	1	48UA012120

Available also as electro-galvanised b.z.p. or hot-dip galvanised h.d.g. version.

Double ended column anchor



Universal anchor



Lifting device / Accessories

Version: electro-galvanised

Type	Height [mm]	Weight [kg/pc.]	PU [pc.]	Ref.-No.
2.5	265	1.81	1	48RK025265
5.0	330	3.54	1	48RK050330
10.0	425	8.02	1	48RK100425
26.0	605	30.60	1	48RK260605

Version: electro-galvanised

Type	Height [mm]	Weight [kg/pc.]	PU [pc.]	Ref.-No.
1.3	320	0.42	1	48RK012320

Version: Plastic

Type	Width [mm]	Weight [kg/pc.]	PU [pc.]	Ref.-No.
1.25	60	0.05	1	48AKA07012
2.5	104	0.08	1	48AKA01025
5.0	126	0.21	1	48AKA01050
10.0	188	0.59	1	48AKA01100
26.0	234	1.66	1	48AKA01260

Ring clutch



Ring clutch with wire rope



Recess former



Transport anchor systems

Connection technology

Facade technology

Fixing technology

Noise reduction technology

Earthing technology

PHILIPP Cast-in lifting hoops



Content

■ Cast-in lifting hoop	Page	40
■ Wire protection pulley	Page	40
■ Angled loop	Page	41
■ Cast-in lifting hoop, open design	Page	41
■ Polypropylene lifting loop	Page	41

Transport anchor systems

Connection technology

Facade technology

Fixing technology

Noise reduction technology

Earthing technology

Cast-in lifting hoops

Transport anchor systems

Connection technology

Facade technology

Fixing technology

Noise reduction technology

Earthing technology

Version: galvanised				
Type	Length [mm]	Weight [kg/100 pcs.]	PU [pc.]	Ref.-No.
0.8	235	8.50	1	442008
1.2	235	11.00	1	442012
1.6	235	15.40	1	442016
2.0	270	21.50	1	442020
2.5	310	30.50	1	442025
4.0	340	49.50	1	442040
5.2	365	72.50	1	442052
6.3	380	99.50	1	442063
8.0	440	144.50	1	442080
10.0	515	208.50	1	442100
12.5	570	279.50	1	442125
16.0	605	394.50	1	442160
20.0	730	589.00	1	442200
25.0	780	826.00	1	442250
28.0	765	827.00	1	442280
32.0	870	1030.00	1	442320

Cast-in lifting hoops up to SWL 99.0 tons on request

Version: bright				
Type	Length [mm]	Weight [kg/100 pcs.]	PU [pc.]	Ref.-No.
4.0	340	49.50	1	441040
5.2	365	72.50	1	441052
6.3	380	99.50	1	441063
8.0	440	144.50	1	441080
10.0	515	208.50	1	441100
12.5	570	279.50	1	441125
16.0	605	394.50	1	441160
20.0	730	589.00	1	441200
25.0	780	826.00	1	441250
28.0	765	827.00	1	441280
32.0	870	1030.00	1	441320

Cast-in lifting hoops up to SWL 99.0 tons on request

Version: galvanised				
Type	Diameter [mm]	Weight [kg/pc.]	PU [pc.]	Ref.-No.
2.0	43	0.12	1	44SR008020
6.3	75	0.75	1	44SR025063
16.0	112	2.90	1	44SR080160
25.0	148	6.25	1	44SR200250
52.0	202	16.40	1	44SR280520
99.0	256	29.00	1	44SR570990

Cast-in lifting hoop



Cast-in lifting hoop



Wire protection pulley



Cast-in lifting hoops

Version: bright

Type	Length loop [mm]	Length leg [mm]	Weight [kg/100 pcs.]	PU [pc.]	Ref.-No.
1.6	150	330	22.00	1	44W08150330
2.5	150	330	34.00	1	44W10150330
2.5	180	350	43.00	1	44W10180350
4.0	160	380	55.00	1	44W12160380
4.0	230	380	62.00	1	44W12230380
5.2	230	380	84.00	1	44W14230380

Other dimensions available on request

Version: galvanised

Type	Length [mm]	Weight [kg/100 pcs.]	PU [pc.]	Ref.-No.
8.0	3000	360.00	1	44VZM06
10.0	3000	450.00	1	44VZM07
12.5	3000	500.00	1	44VZM08
16.0	4000	780.00	1	44VZM09
18.0	4000	960.00	1	44VZM10
25.0	4000	1650.00	1	44VZM11

Other dimensions available on request

Type	Length [mm]	Weight [kg/100 pcs.]	PU [pc.]	Ref.-No.
150	200	1.90	1	43P06
250	200	3.20	1	43P08
360	235	5.60	1	43P10
500	255	10.00	1	43P12
875	280	15.50	1	43P14
1200	320	22.00	1	43P16

Angled loop



Cast-in lifting hoop

Version: open design



Polypropylene lifting loop



Transport anchor systems

Connection technology

Facade technology

Fixing technology

Noise reduction technology

Earthing technology

Further systems



Content

■ Double wall anchor system	Page	44
■ Masonry anchors with wire rope loop	Page	44
■ Light weight concrete anchor with wire rope loop	Page	45
■ Light weight concrete anchor with threaded insert	Page	45
■ Light weight concrete anchor with spherical head	Page	45

Transport anchor systems

Connection technology

Facade technology

Fixing technology

Noise reduction technology

Earthing technology

Further systems

Transport anchor systems

Connection technology

Facade technology

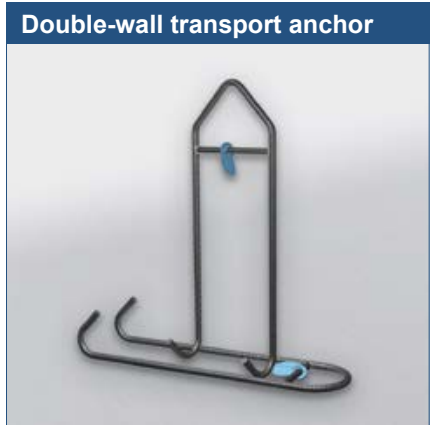
Fixing technology

Noise reduction technology

Earthing technology

Version: bright				
Type	Length [mm]	Rebar Ø [mm]	Width [mm]	Ref.-No.
2700	600	14	120	58HW27120600-1E
2700	600	14	130	58HW27130600-1E
2700	600	14	140	58HW27140600-1E
2700	600	14	150	58HW27150600-1E
2700	600	14	160	58HW27160600-1E
2700	600	14	170	58HW27170600-1E
2700	600	14	180	58HW27180600-1E
2700	600	14	190	58HW27190600-1E
2700	600	14	200	58HW27200600-1E
2700	600	14	210	58HW27210600-1E
2700	600	14	220	58HW27220600-1E
2700	600	14	230	58HW27230600-1E

Special solution available on request.



Version: waved with wire rope loop					
Type [RD]	Length [mm]	Rebar Ø [mm]	Weight [kg/100 pcs.]	PU [pc.]	Ref.-No.
900	1,500	8	70.00	1	73MW081500
900	2500	8	130.00	1	73MW082500
1400	2500	10	168.00	1	73MW102500
1400	2750	10	190.00	1	73MW102750
1400	3000	10	200.00	1	73MW103000
2000	2500	12	242.00	1	73MW122500
2000	2750	12	260.00	1	73MW122750
2000	3000	12	280.00	1	73MW123000
3100	2000	14	230.00	1	73MW142000
4000	2300	16	260.00	1	73MW162300
4000	2500	16	270.00	1	73MW162500

Other versions available on request.
(e.g. higher load capacities, further lengths, with threaded insert or spherical head)



Further systems

Version: with wire rope loop

Type	Length [mm]	Weight [kg/pc.]	PU [pc.]	Ref.-No.
1400	2250	2.30	1	73MW102250LB
2000	2250	3.20	1	73MW122250LB
3100	2250	4.20	1	73MW142250LB
4000	2250	5.00	1	73MW162250LB

Other versions available on request.

Version: with threaded insert

Type [M]	Length [mm]	Weight [kg/pc.]	PU [pc.]	Ref.-No.
16	2250	2.00	1	73HM162250LB
20	2250	3.10	1	73HM202250LB
24	2250	4.20	1	73HM242250LB
30	2250	5.20	1	73HM302250LB

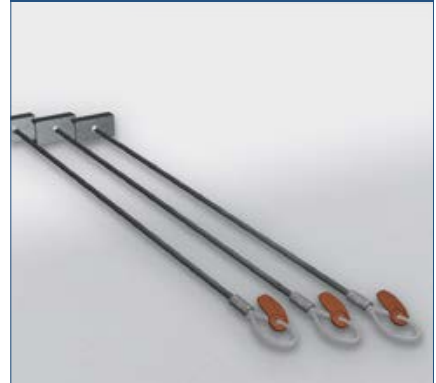
Other versions available on request.

Version: with spherical head

Type	Length [mm]	Weight [kg/pc.]	PU [pc.]	Ref.-No.
1.3	2250	2.10	1	73KK102250LB
2.1	2250	3.00	1	73KK122250LB
3.1	2250	4.10	1	73KK142250LB
4.0	2250	5.00	1	73KK162250LB

Other versions available on request.

Light weight concrete anchor



Light weight concrete anchor



Light weight concrete anchor



Transport anchor systems

Connection technology

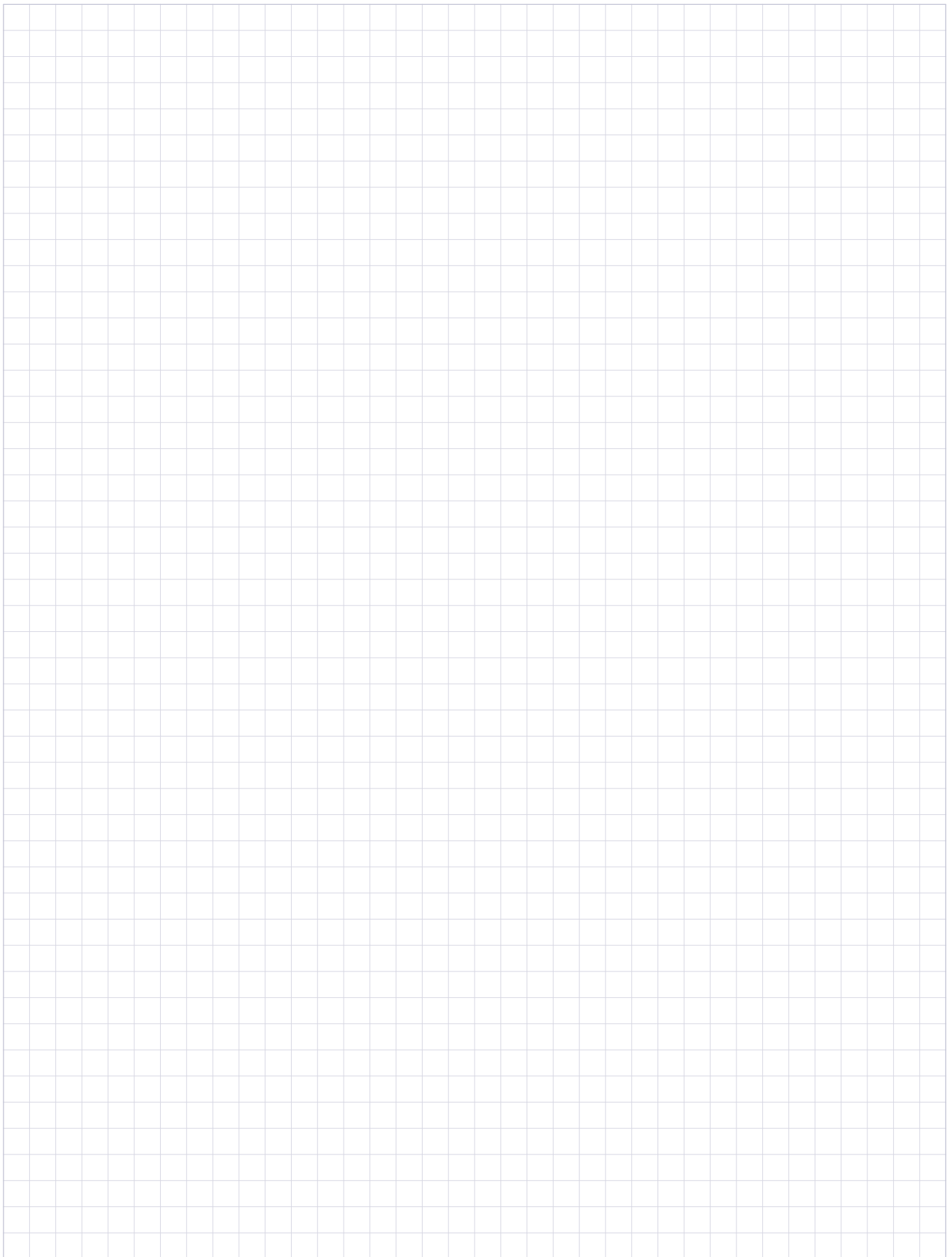
Facade technology

Fixing technology

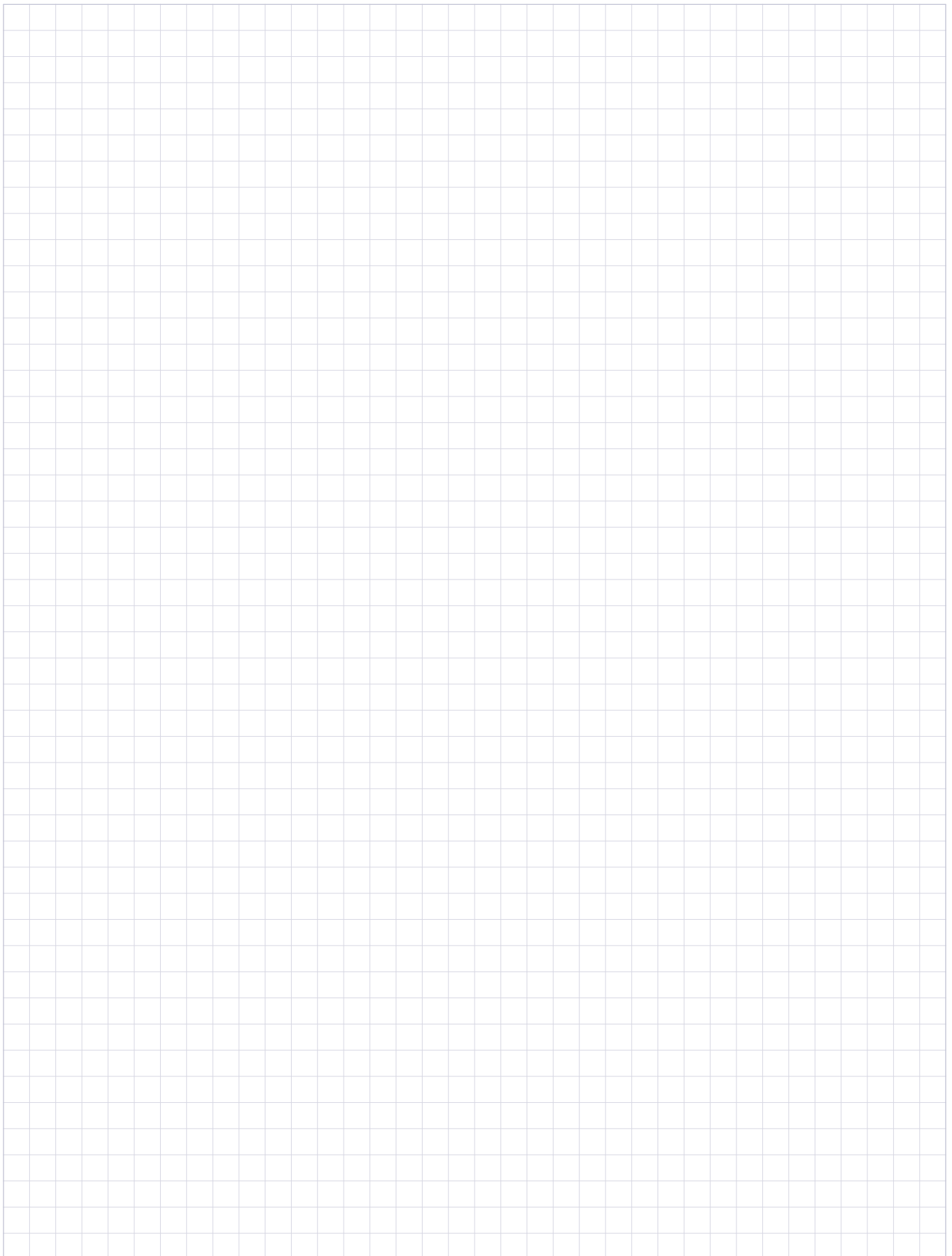
Noise reduction technology

Earthing technology

Notes:



Notes:



Our customers trust us to deliver. We do everything in our power to reward their faith and we start each day intending to do better than the last. We provide strength and stability in an ever-changing world.

Welcome to the PHILIPP Group

Sustainable
solutions



PHILIPP GmbH

Lilienthalstrasse 7-9
D-63741 Aschaffenburg
Phone: +49 (0) 6021/40 27-0
Fax: 49 (0) 6021/40 27-440
info@philipp-gruppe.de

PHILIPP GmbH

Roßlauer Strasse 70
D-06869 Coswig/Anhalt
Phone: 49 (0) 34903/6 94-0
Fax: 49 (0) 34903/6 94-20
info@philipp-gruppe.de

PHILIPP GmbH

Sperberweg 37
D-41468 Neuss
Phone: +49 (0) 2131/59 18-0
Fax: +49 (0) 2131/59 18-10
info@philipp-gruppe.de



PHILIPP Vertriebs GmbH

Leogangerstraße 21
A-5760 Saalfelden / Salzburg
Phone + 43 (0) 6582 / 7 04 01
Fax + 43 (0) 6582 / 7 04 01 20
info@philipp-gruppe.at

For more information visit our website: www.philipp-group.de